

Autodesk®

Quantity Takeoff

Every building
has its price.



Autodesk®

Cost Early, Cost Often

Autodesk® Quantity Takeoff software helps make cost estimating faster, easier, and more accurate, from design through delivery.

Regardless of what phase you are in during a project—from design through preconstruction—Autodesk Quantity Takeoff helps enable cost estimators to more rapidly generate material quantity takeoffs and perform conceptual estimates. Whether you have an image file of a napkin sketch or a fully developed building information model (BIM) developed in Autodesk® Revit-based products, Autodesk Quantity Takeoff helps cost estimators to gain an in-depth understanding of project costs.

With Autodesk Quantity Takeoff software, cost estimators can easily create synchronized, comprehensive project views that combine pertinent information from building information modeling tools (such as Autodesk® Revit® Architecture software, Autodesk® Revit® Structure software, Autodesk® Revit® MEP software, and Autodesk® Inventor® software) with geometry, images, and data from other applications.

Take advantage of digital property data to automatically or manually measure areas and count or price building components such as walls, doors, and window. Then print the results, export to Microsoft® Excel® software, or publish to DWF™ file format.

Stay Digital

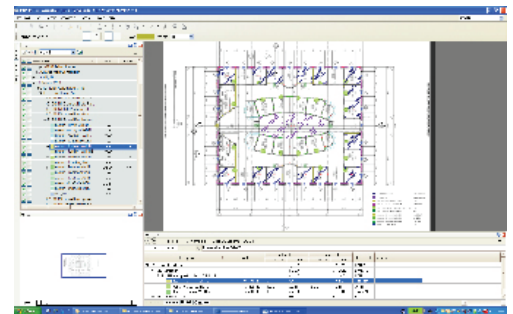
More consistent productivity depends on up-to-date drawings and data. Autodesk Quantity Takeoff reporting tools helps enable users to create digital, detailed materials reports much faster than paper-based processes. With Autodesk Quantity Takeoff, you can keep your workflow digital and help ensure that reports, materials quantities, and other data remain up to date.

Stay Realistic

More efficiently count and quantify building components and their compositions. Related components are more easily cross-referenced to help ensure that your valuable time is spent costing, not counting.

Stay on Track

Autodesk Quantity Takeoff uses the latest Autodesk® technology to provide drawing, viewing, quantification, and markup capabilities, uniting design data and other vital information within an open and fluid architecture. So you can better keep track of changing variables without missing a beat.



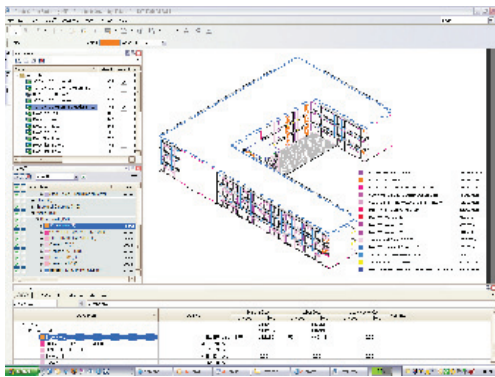
Stay Digital and Up to Date

Use Autodesk Quantity Takeoff software to collect and synchronize design data and help streamline cost-estimation processes.

Takeoff in Minutes Automatically

Autodesk Quantity Takeoff software provides a whole new way of working. Through full integration of and support for 2D and 3D design data, Autodesk Quantity Takeoff helps enable you to perform a takeoff on an entire building information model in just minutes—as opposed to days using traditional methods. The software provides greater flexibility than typical databases or spreadsheets, enabling a smoother, more accurate workflow for cost estimators.

Working in 3D, you can perform intuitive, interactive model examination to gain a better understanding of the model for estimating purposes. Object visibility and transparency are adjustable according to building section or component type. The highly configurable project catalog makes the organization of design and construction objects quicker and easier.



Do It Yourself

Autodesk Quantity Takeoff now has more powerful manual takeoff capabilities that support the takeoff of JPG, TIF, PDF, and other “nonintelligent” image formats. Use multiple line segments, arcs, or a combination of line and arc segments when tracing geometry on a floor plan. Specify whether to treat a series of continuously drawn segments as a single takeoff measurement or as individual takeoff measurements. More rapidly perform area

calculations, linear measurements, and counts, and organize your results more quickly and easily in the project catalog.

Spot the Difference

If you are working with DWF files, you can use the Sheet Compare function to compare 2D sheets from your current takeoff project with an internal or external sheet. Then you can more quickly generate a list of modifications and view a visual representation of the differences.

Quantify More Quickly

Now you can count and quantify all of your project design data more quickly and easily. Use unlimited component subassemblies to categorize and count materials to an infinite level of detail. Use the Search Takeoff function to help expedite takeoff of similar intelligent drawing objects. Organize them in the component catalog, then more quickly analyze your results in the dynamic Autodesk Quantity Takeoff Workbook.

Maintain a Dynamic Document of Record

The Autodesk Quantity Takeoff Workbook helps enable cost estimators to compile, update, and interact with quantity-related project data. In the workbook, you can switch between a cost summary view and a detailed object view for any item. View information for the current sheet or for the entire project. Add and edit item and assembly formulas, and define item properties, directly in the Workbook, using Auto Fill and other tools that function like those in Microsoft Excel. Enter overrides for item and object dimensions. See which items and objects contain overrides. All contents can be saved for a comprehensive document of record at project's end.

With the help of Autodesk Quantity Takeoff software, cost estimators can collect and quantify multiformat design data and high-quality images, and utilize property data to automatically or manually measure, count, and price various building objects.

We have so much more confidence in the prices we relay to owners and other stakeholders. With Quantity Takeoff, we know the numbers are right.

—Ken Deemer
Lead Estimator
Saunders Construction

Learn More or Purchase

Access specialists worldwide who can provide product expertise, a deep understanding of your industry, and value that extends beyond your software purchase. To purchase Autodesk Quantity Takeoff software, contact an Autodesk Premier Solutions Provider or Autodesk Authorized Reseller. Locate a reseller near you at www.autodesk.com/reseller.

Autodesk Learning and Education

From instructor-led or self-paced classes to online training or education resources, Autodesk offers learning solutions to fit your needs. Get expert guidance at an Autodesk Authorized Training Center (ATC®) site, access learning tools online or at your local bookstore, and validate your experience with Autodesk certifications. Learn more at www.autodesk.com/learning.

Autodesk Services and Support

Accelerate return on investment and optimize productivity with innovative purchase methods, companion products, consulting services, and support from Autodesk and Autodesk authorized partners. Designed to get you up to speed and keep you ahead of the competition, these tools help you make the most of your software purchase—no matter what industry you are in. Learn more at www.autodesk.com/servicesandsupport.

Autodesk Subscription

Get the benefits of increased productivity, predictable budgeting, and simplified license management with Autodesk® Subscription. You get any new upgrades of your Autodesk software and any incremental product enhancements, if these are released during your Subscription term. In addition, you get exclusive license terms available only to Subscription members. A range of community resources, including web support direct from Autodesk technical experts, self-paced training, and e-Learning, help extend your skills and make Autodesk Subscription the best way to optimize your investment. Learn more at www.autodesk.com/subscription.

Autodesk is committed to sustainability. This brochure is printed on 25 percent postconsumer waste recycled paper.

Autodesk, AutoCAD, ATC, DWF, DWG, Inventor, and Revit are registered trademarks or trademarks of Autodesk, Inc., and/or its subsidiaries and/or affiliates, in the USA and/or other countries. All other brand names, product names, or trademarks belong to their respective holders. Autodesk reserves the right to alter product offerings and specifications at any time without notice, and is not responsible for typographical or graphical errors that may appear in this document.
© 2010 Autodesk, Inc. All rights reserved.